

RL-809-S-94

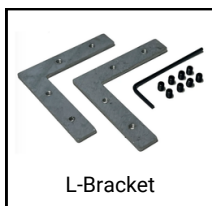
Recessed Mount LED Channel

Description

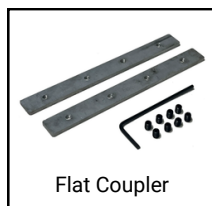
The RL-809-S-94 is recessed mount LED channel. It includes a channel, lens, and end caps. Available in 94" sections.

Features

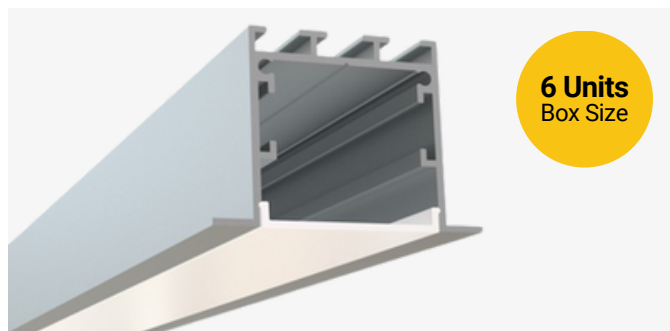
- Compatible with all of EnoLED's LED Tapes
- Hotspot-free
- Aluminum Finish
- Available in 94" sections
- Field Cuttable
- Includes a channel, lens, and end caps
- Max tape width: 1.30" (33.10mm)



L-Bracket



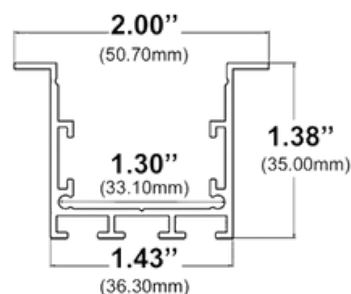
Flat Coupler



6 Units
Box Size

Dimensions

RL-809-S-94



Width (outside): 1.43" (36.30mm)

Width (inside): 1.30" (33.10mm)

Height: 1.38" (35.00mm)

Length: 94" (2.38m)

Ordering Information

Ordering Code	Description
RL-809-S-94	94" Channel kit - 1 aluminum channel, 1 frosted cover lens, 2 end caps
RL-809-S-94-FL	Cover Lens (Frosted)
RL-809-S-94-EC-P2	End caps - 2 units pack
RL-809-S-94-EC-P10	End caps - 10 units pack
RL-809-S-94-MS	Mounting Spring
RL-809-Bracket-L	L-Bracket
RL-809-Bracket-FC	Flat Coupler